

## TECHNICAL DATA SHEET



# IWP

Integral Waterproofing Compound

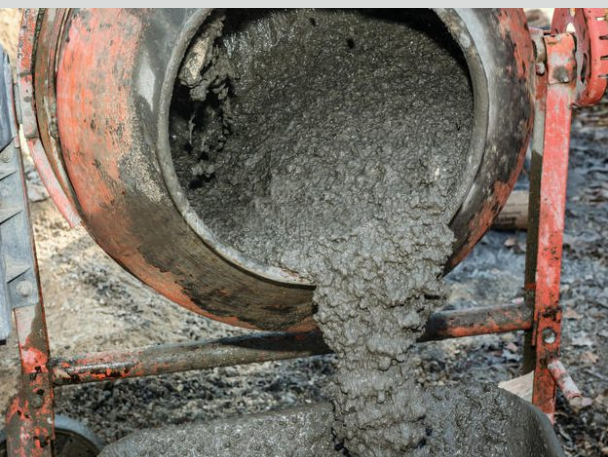
(Ref. MBPL / TDS / IWP / 0524)

### ❖ Product Description

**IWP** (Integral Waterproofing Compound) is an advanced additive specifically formulated to enhance the waterproofing properties of concrete & mortar. It is designed to be incorporated directly into concrete mixtures, offering exceptional integral waterproofing capabilities. Adding IWP to concrete, significantly improves the durability and longevity of structures by providing superior protection against water penetration.

### ❖ Special Features

- Complies with the requirements of **IS 2645 : 2003**
- Enhances the waterproofing performance of concrete & mortar
- Reduces water absorption and permeability
- Increases the strength and durability of concrete & mortar
- Enhances the durability and lifespan of structures
- Reduces the risk of water penetration and associated issues
- Compatible with various types of cement and concrete mixes
- Improves resistance to chemical attacks and corrosion.



## ❖ Application

- Basements and underground structures
- Water tanks and reservoirs
- Swimming pools and fountains
- Retaining walls and foundations
- Roof slabs and terrace constructions
- Bridge decks and tunnels
- Any concrete structure requiring waterproofing

## ❖ Suitable Substrates

- Cement-based concrete
- Reinforced concrete
- Pre-cast concrete elements
- Cement mortars
- For internal & external plastering

## ❖ Dosage

- The recommended dosage of IWP is typically 200 ml per 50 kg bag of cement

## ❖ Packing

Available in **200 ml, 1, 5, 10 & 20 litre.**

## ❖ Shelf Life & Storage

- When stored in a cool and dry place, unopened containers of MYMIX - IWP have a shelf life of 12 months from the date of manufacture.

## ❖ Method of Application

- Carry the mixing of cement and aggregates as per the mix ration for 1-2 minutes.
- Add the 80-90% of water to the mix and continue the mixing for 2-3 minutes.
- Then add the MYMIX - IWP as per the recommended dosage to the remaining water and add to the concrete. Carry the mixing for 2-3 more minutes.
- Carry forward the application of concrete mix.

## ❖ Notes on Applications / Limitations

- Follow the recommended dosage guidelines.
- Conduct trial mixes to determine the optimal dosage and compatibility with the concrete mix.
- Adhere to the standard concrete mixing and placement practices for best results.
- Maintain the water cement ratio as low as possible.

## ❖ Technical Data

Parameters	Typical Values
Appearance	Free - flowing liquid
Colour	Reddish brown
Specific Gravity	1.05 - 1.15 g/cc
pH value	10 -12
Workability	Improves workability
Setting Time	Passes
Chloride Content	Passes
Compressive Strength	Passes

## ❖ Standards Followed

- Complies with the requirements of **IS 2645 : 2003** for integral cement waterproofing compounds.
- Meets the performance standards for waterproofing compounds as per industry best practices.

## ❖ Precautions

- Wear appropriate personal protective equipment (PPE) during handling and application.
- Avoid contact with skin and eyes. In case of contact, rinse immediately with plenty of water and seek medical advice if irritation persists.
- Keep out of reach of children and pets.
- Store the product in a cool, dry place away from direct sunlight and sources of heat.
- Follow the safety instructions and guidelines provided in the product's Material Safety Data Sheet (MSDS).

Follow us on:



## Disclaimer



is a registered trademark of MYMIX BUILDPRO Private Limited.

The information given in this TDS is for general guidance only. Specific instruction for various site conditions can be provided on demand.

The product information & application details given by the company & its agents has been provided in good faith & meant to serve only as a general guideline during usage. Users are advised to carry out tests & take trails to ensure on the suitability of products meeting their requirement prior to full scale usage of our products. Since the correct identification of the problems, qualities of other materials used and on site workmanship are factors beyond our control, there are no expressed or implied guarantee/warranty as to the results obtained. The company does not assume any liability or any consequential damage for unsatisfactory results, arising from the use of our products.