

TECHNICAL DATA SHEET



LEAK PLUG

Fast setting compound for instant water leakage plugging

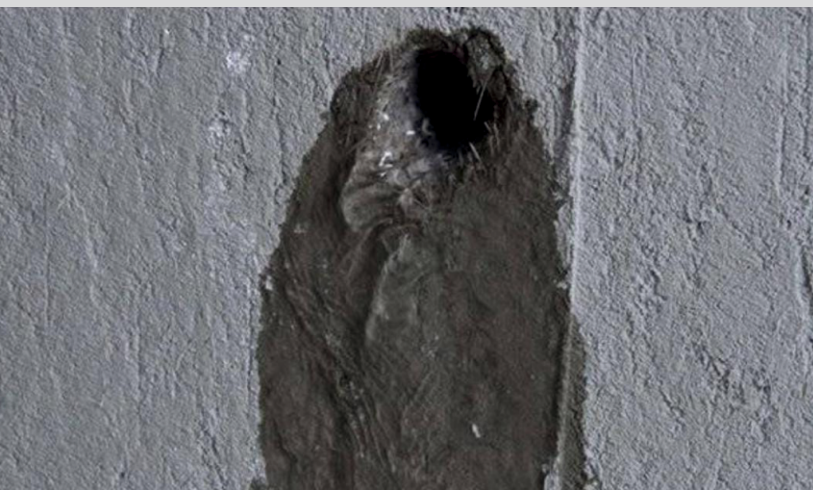
(Ref. MBPL / TDS / LEAK PLUG / 0524)

❖ Product Description

MYMIX - LEAK PLUG is specially designed to stop the flow of running water & instant leak plugging compound. it works to seal leaks and plug wet cracks in concrete and masonry surfaces. It is Rapid setting powder for water stopping mortar.

❖ Special Features

- Non-toxic and chloride free
- Ready to use, just added water
- Rapid setting



❖ Applications

- Basement.
- Concrete pipe.
- Concrete and tunnels & dams.
- Foundations and mines.
- Water tank and sewerage systems.
- Joint filling.

❖ Advantages

- Emergency water-stopping capability.
- Single component- only clean water needs to be added.
- Excellent bond to the substrate.
- Quick strength development.
- Rapid setting prevents washout in the presence of running water.

❖ Packing

- Available in **1 kg, 5 kg & 20 kg.**

❖ Shelf Life

- Factory-sealed packs are best before 12 months from the date of manufacturing in unopened condition and stored in a cool and dry place.

❖ How to Apply

Surface Preparation

- Repairs areas should be cut back to 15 mm. depths minimum.
- Feather edges must not be allowed.
- Surface should be clean without loose material dust; laitance and anything affect bonding between cementitious substrate and material.

Mixing

- Take cool and clean tap water as per the ratio of 1:4 (1 part of water :4 parts of the MYMIX – LEAK PLUG)
- Mix to a workable consistency in a suitable mixing drum or bucket, using a trowel or gloved hand.
- Mix only a enough quantity of product which can be placed within a minute.

❖ How to Apply

Application

- Applied MYMIX-LEAK PLUG in the repair area and ensured product maximum contact with substrate before the material reached its setting time.
- Should be used and held in place until the initial setting time is achieved.
- Remove excess material from the substrate by scraping it away with a spatula or trowel after the sealing is complete.

Notes on Application / Limitation

- MYMIX-LEAK PLUG will plug leakages only on cementitious substrates.
- Only used for plugging leakage instantly, till permanent repairs are carried out.
- Note the minimum applied thickness of MYMIX-Leak Plug should be 15 mm.

❖ Technical Data

Testing Parameters	Results
Appearance	Greyish Cementitious Powder
Mixing Ratio	Approx. 25% water by weight
Setting Time	1 - 2 mins
Compressive Strength	
6 hours	~ 8 Mpa
1 day	~ 10 Mpa
7 days	~ 15 Mpa
28 days	~ 25 Mpa


❖ Precautions

- In case of contact with skin/eyes, wash immediately with plenty of water & seek medical help.
- Wear a mask while working.
- Wear suitable protective clothing, gloves, eye protection and respiratory protective equipment.

Follow us on:



Disclaimer

 is a registered trademark of MYMIX BUILDPRO Private Limited.

The information given in this TDS is for general guidance only. Specific instruction for various site conditions can be provided on demand.

The product information & application details given by the company & its agents has been provided in good faith & meant to serve only as a general guideline during usage. Users are advised to carry out tests & take trails to ensure on the suitability of products meeting their requirement prior to full scale usage of our products. Since the correct identification of the problems, qualities of other materials used and on site workmanship are factors beyond our control, there are no expressed or implied guarantee/warranty as to the results obtained. The company does not assume any liability or any consequential damage for unsatisfactory results, arising from the use of our products.